

The top life at the tip of your fingers.
Ulwe's **first remote-controlled** homes.

Emerald
Ulwe, Navi Mumbai



Head Office Address

516/517, Neelkanth Corporate Park, Near Vidyavihar Station, Vidyavihar (West), Mumbai - 400 077.

Contact Details

Mob.: 97681 47157 | **Tel:** 022 25121208/09/10 | **E-mail:** info@4thappleheights.com

Architect: Soyuz Talib - 2781 0762

Structural Consultant: Rajesh Ladhad - 2781 0993

Note : The information contained in this brochure is indicative of the kind of development that is proposed & subject to the approvals of the authorities or in the interest of continuing improvement, the developers reserve the right to change the plans, specifications, elevation features without obligation. Furniture and Fixture are only depiction & will not be provided. While every care has been taken in providing this information, the Owner or the agent cannot be held responsible for any inaccuracies.

thoughttrains.com



A project by



Developers

WHERE VISION BECOMES REALITY.

It was twelve years ago, a small seed started evolving into a big tree. 4th Apple Heights, the name that now stands synonymous to trust and lifestyle, stood on the firm roots of trust, excellence, and transparency. Today, with its branches spread out across the beautiful locales of Mumbai, it is now growing by leaps and bounds. This has been a tremendous journey for the torchbearers.

With only a few years under their belt, they are now a name that reflect luxury and exceptional offerings in the world of real estate. After earning a name for their marvellous creations in Mumbai, they have now set their sights on Navi Mumbai. Taking their first steps in Navi Mumbai, they recently launched Emerald with one of their ambitious verticals – M2 Developers. An iconic project in Ulwe, it is excellent in design and magnificent in scale. A project that has at its disposal every possible facet of a great lifestyle.

Slowly, but steadily, the group has expanded its horizons, only raring to go beyond excellence.



MORE THAN A DECADE OF TRUST AND LIFESTYLE.

THE GROUP
THAT
ENVISIONS
A WORLD OF
EXCELLENCE.



Dhana-Shree Pearl Talaja

Dhana-Shree Sapphire Vikhroli

Dhana-Shree Solitaire Vikhroli

Dhana-Shree Heights Andheri

ULWE'S FIRST AUTOMATED HOMES.

In this 6 storeyed magnificence, the lifestyle reaches high up above. Offering 1 & 2 BHK spacious remote-controlled apartments, here, top-notch features are combined for taking life to a new level.

Project Highlights

- 6 storeyed elegant tower
- 1 & 2 BHK remote-controlled apartments
- 6 commercial shops
- Ultra-modern amenities and facilities
- Open spaces outside the building, with lush green surroundings and a scenic view
- In close proximity to the upcoming NMSEZ (Reliance Group).

Emerald

Ulwe, Navi Mumbai

AUTOMATED RESIDENCES | 1 & 2 BHK

THE PROJECT
THAT GIVES
LIFESTYLE
A NEW
MEANING.



THE CITY OF TOMORROW. THE FUTURE OF CONVENIENCE.

Ulwe, a future-ready location in Navi Mumbai, has all the mandatory features that a brilliant location has to offer. It is a place where you can live, enjoy and share the joyous moments of a modern lifestyle, coupled with unmatched accessibility and brilliant location advantages. Being a nature-wise wealthy suburb, it is a prime and the most sought-after location for individuals and families alike.

In simple words, you look for a home, and Ulwe gives you a world.

LOCATION ADVANTAGES

- Excellent connectivity to: Palm Beach Mumbai-Pune Expressway | CBD Belapur | Vashi | Mumbai-Goa Highway | J.N.P.T. Port
- 10 minutes drive to Navi Mumbai International Airport
- 5 mins. walk to Bamandongri Railway Station
- Banks, Markets, Hospitals, Schools, Restaurants, and Hotels at a close distance from Emerald
- 300 mtrs. away from the upcoming NMSEZ (Reliance Group)
- 2 kms. away from proposed Nhava Sheva-Sewree Sea Link
- 5 mins. away from all major civic conveniences
- In close proximity to NRI Complex

ULWE, NAVI MUMBAI

THE CITY OF TOMORROW.
THE FUTURE OF CONVENIENCE.

A FUTURISTIC
LOCATION
WITH A
SCENIC
AMBIENCE



Palm Beach Road



NMSEZ (Reliance Group)



Metro Railway



J.N.P.T. Port



NMMT & BEST buses



Nhava Sheva-Sewri Sea Link



Proposed International Airport, Navi Mumbai



LOCATIONAL CONVENIENCE

Emerald

Ulwe, Navi Mumbai

ROUTE
FROM
VASHI
TO ULWE



A RICHNESS THAT REJUVENATES.

Automated Homes

'Rest' has been the most talked about word all around. Well, we say enough – Leave the 'rest' on us. With homes controlled at the tip of your fingers, we offer the ultimate lifestyle of comfort and convenience. Imagine. With just a single touch, the lights dim, the TV turns on and your favourite movie begins.

Imagine, what an automated experience could bring to your lifestyle.

Grand Entrance Lobby

Stay astonished by the most lavish designs at the entrance lobby and beauty of the flooring that suits your taste for luxury. Welcome to the high life that you've always dreamed of. Welcome to Emerald.



TREAT YOURSELF TO TRUE LAVISHNESS

AUTOMATED
HOMES
GRAND
ENTRANCE
LOBBY



FACILITIES FURNISHED WITH INNOVATION AND CONTEMPORARY FEATURES.

At Emerald, we let you emphatically bask in the extravagances at offer. For those wishing to experience a world of elegance, we allow you to take a plunge into a plethora of thoughtfully designed features, appealing to your diverse requirements. To say the least, adding to a splendid life, we present you with luxury that is yours for the taking. It's time you live a life of lavishness.

Special Luxury Facilities

- Automated Homes
- Grand Entrance Lobby with a well-appointed waiting area
- Children's Play Area
- Designer Landscapes
- Sit-out Areas
- Bamboo Gardens
- Solar Water Heater



**INNOVATIONS FOR AN
ULTRA-LUXURIOUS LIVING EXPERIENCE.**

LUXURY
FACILITIES
EXUDING
THE
TOUCH OF
OPULENCE.



A SECURED AND CONVENIENT HAVEN.

Emerald is a tower designed with facilities that make for a peaceful living and features that upgrade your lifestyle standards. Blending contemporary styles with utility value, the tower is built along seismic guidelines to provide strength and stability, making your world safe and secured. In short, we create an epitome of hassle-free living, not only guaranteeing a lifetime of happiness but also a lifetime of quality living.

TOWER FACILITIES

- Branded elevator
- Earthquake resistant R.C.C. structure
- Surveillance cameras
- Back-up generators for lift, water pump and common areas
- Fire fighting facilities
- Sheltered parking space
- Rainwater harvesting



LOVE WHERE YOU LIVE.
LIVE WHERE YOU LOVE.

TOWER
FACILITIES
DEFINING AN
EXCLUSIVE
WORLD OF
LUXURY.



FLAWLESS CONSTRUCT OF MODERN DESIGNS.

Here, we have a flawless construct of efficient and modern designs with a simple thought. Live more. You'll sense it right in your living room, to every corner of the home you're living in. That's what defines our homes. It's a standard that is set apart, for you.

Flooring

- Vitrified flooring in living room, bedroom and kitchen
- Anti-skid tiles in attached terrace areas

Kitchen

- Granite kitchen platform with glazed lustre tiles above platform
- Branded stainless steel sink
- Provision for water purifier

Toilets

- Designer tiles up to beam height in bathroom with branded sanitary ware
- Concealed plumbing with branded C.P. fitting
- Provision of geyser in the bathroom
- Aluminium Bakelite door with marble frame in bathrooms

COMPROMISE LESS ON LUXURY. MORE ROOM FOR JOY.

Doors & Windows

- Elegant laminate finished entrance door and painted internal doors
- Safety door for every flat
- Painted internal doors in every room with elegant handles and locks
- Powder coated / anodized sliding windows
- Granite / marble window sill with half round moulding

Walls & Paints

- Gypsum / POP finished internal walls
- Paints of premium quality on interior walls

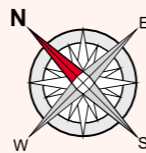
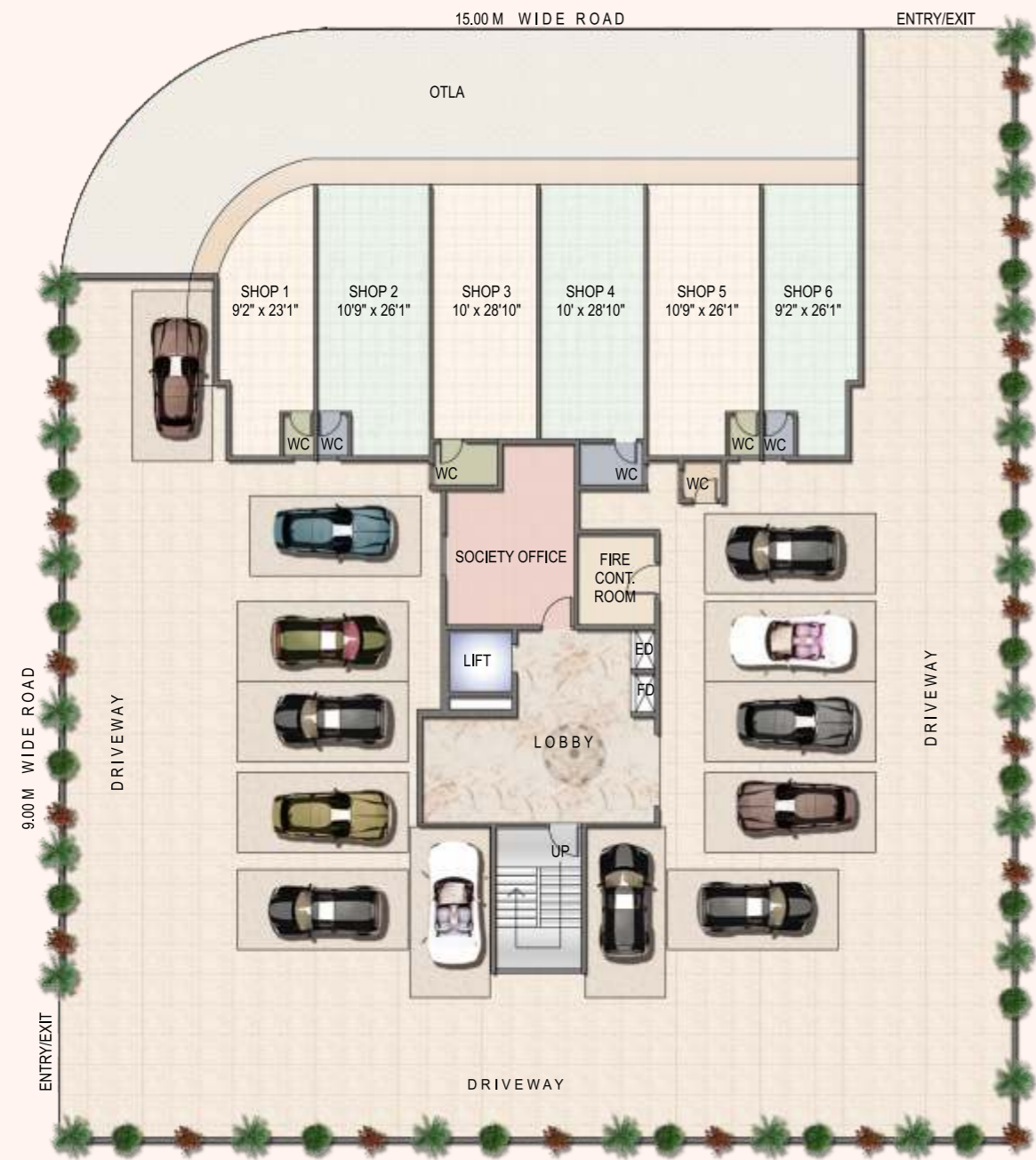
Electrification

- Branded concealed copper wiring with MCB / ELCB
- Branded electrical fittings with modular switches
- Telephone, television and internet points

INTERNAL
AMENITIES -
PRESENTING
THE BEAUTY
OF
INNOVATION.



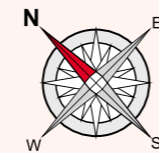
GROUND FLOOR PLAN



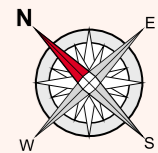
1ST FLOOR PLAN



2nd & 4th FLOOR PLAN



3rd & 5th FLOOR PLAN



6th FLOOR PLAN

